

WEEKLY BULLETIN

P: +233 303305134 | E: info@tis.edu.gh | W: www.tis.edu.gh

At TIS,

we believe excellence is achieved by continuously improving your personal best in all endeavours through consistent effort, positive attitude, regular reflection, balance, persistence, a growth mindset and no excuses.

Calendar

October

27 Students return to hostels.

30 Psychology excursion.

31 GIS MUN

November

1/2 TIS Annual Play;
GIS MUN

9 TISSA Volleyball

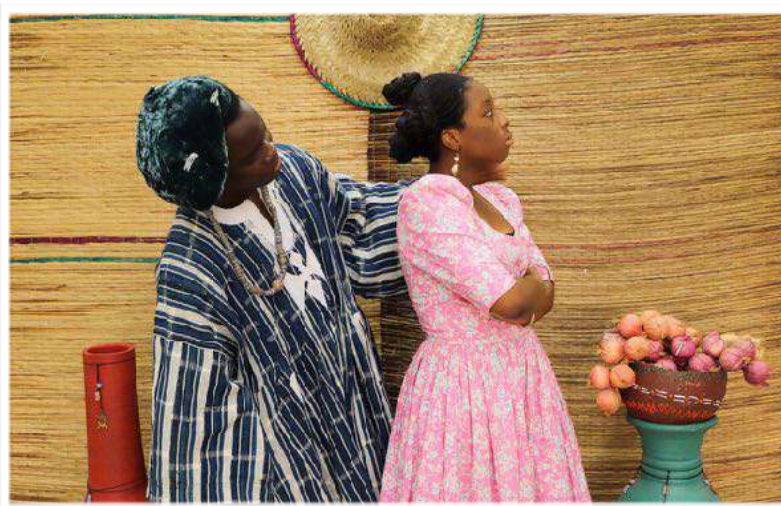
11 TOK final presentations

16 TISSA Basketball

Thought for the Week

There are only two ways to live your life. One is as though nothing is a miracle. The other is as though everything is a miracle.

- Albert Einstein



7 More Sleeps

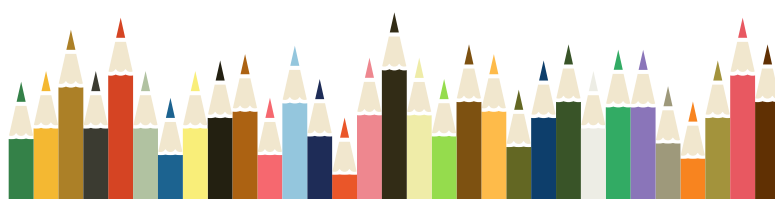
Have you purchased your ticket for this year's annual performance: an adaptation of *The Marriage of Anansewa*?

There are two performances only: Friday, 1 November, and Saturday, 2 November.

Tickets are GHC40 for adults and GHC20 for children/students. Tickets are available from either TIS campus. They will also be on sale at the gate on each night.

Reminders

- Students return to hostels on Sunday, 27 October. (Well, that was a short break!)
- Any student playing football and/or street soccer (futsal) must wear shin guards. The shin guards that some students wear are appropriate for Primary School students only, and



Do the right thing,
even when no one
is watching.

It's called integrity.

Making Us Proud

- The Language and Literature Department for the successful 6th edition of the Creative Writing and Photography Workshop.
- Akos Osei and Oge Moghalu, two outstanding TIS ambassadors.

Reminders

- Please read the weekly TIS Bulletin and take action as required.

- Exeats: All exeat requests must be completed and submitted online. To access the online exeat form, please go to: <https://www.tis.edu.gh/exeat-form>

- A separate exeat has been created for urgent medical reasons. Please complete the online version at:

<https://www.tis.edu.gh/medical-exeat-form/>

- Student Medications: Any student medication must be sent to the Infirmary, along with medication instructions.
- Devices: Students are allowed only one device which must be a laptop. Mobile phones are banned.

these students will be required to purchase more appropriate-fitting shin guards. There will be no excuses after this break.

- Please ensure all personal items are clearly labelled.
- All parents who had not accessed ManageBac (MB) were emailed with a solution at the beginning of the week. If you require assistance, then please email me (principal@tis.edu.gh)
- TIS has an outstanding team of University Counsellors, referred to affectionately as, the College Guides. They are most happy to assist students and their parents with any issues or matters relating to the university placement process. The USA SAT scandal has made various universities take note of the use of external consultants in the submission of university applications. In particular, the veracity of personal statements and authenticity of applications are being called into question. Our College Guides have a responsibility to inform universities if students are using external consultants.

We look forward to the safe return of students to hostels on Sunday. Classes at each campus commence on Monday, 28 October.

I appreciate your support.

Dr Ken Darvall

Principal





TEMA INTERNATIONAL SCHOOL



**PRESENTS
AN ADAPTATION OF EFUA SUTHERLAND'S**

THE MARRIAGE OF ANANSEWA



an entangled affair...

**FRIDAY -1 | NOVEMBER, 2019
SATURDAY -2**

MPH (TIS MAIN CAMPUS)

**STUDENTS
20^{GHC}**

7:00PM

**ADULTS
40^{GHC}**

**All proceeds go towards students'
community service initiatives and projects.**



NEWS FROM SLAPTON FIELD TRIP (UK)

The group arrived in Slapton on Friday 18 October at 5:30pm. Emily, our resource person met with the students to update them on the purpose of research and what to look out for throughout their investigations. She outlined the program of the week. Find below activities in pictures from day one to day four.

DAY 1

Exploration of the Slapton Woods and fresh water; this exercise was to help students identify possible Internal Assessment (IA) topics. This involves identification of the various invertebrates in fresh water and Slapton Woods.





DAY 2

Exploring the effect of human activities on biodiversity at the Slapton sands (Shingle Ridge) and the effect of management on the nature reserve.

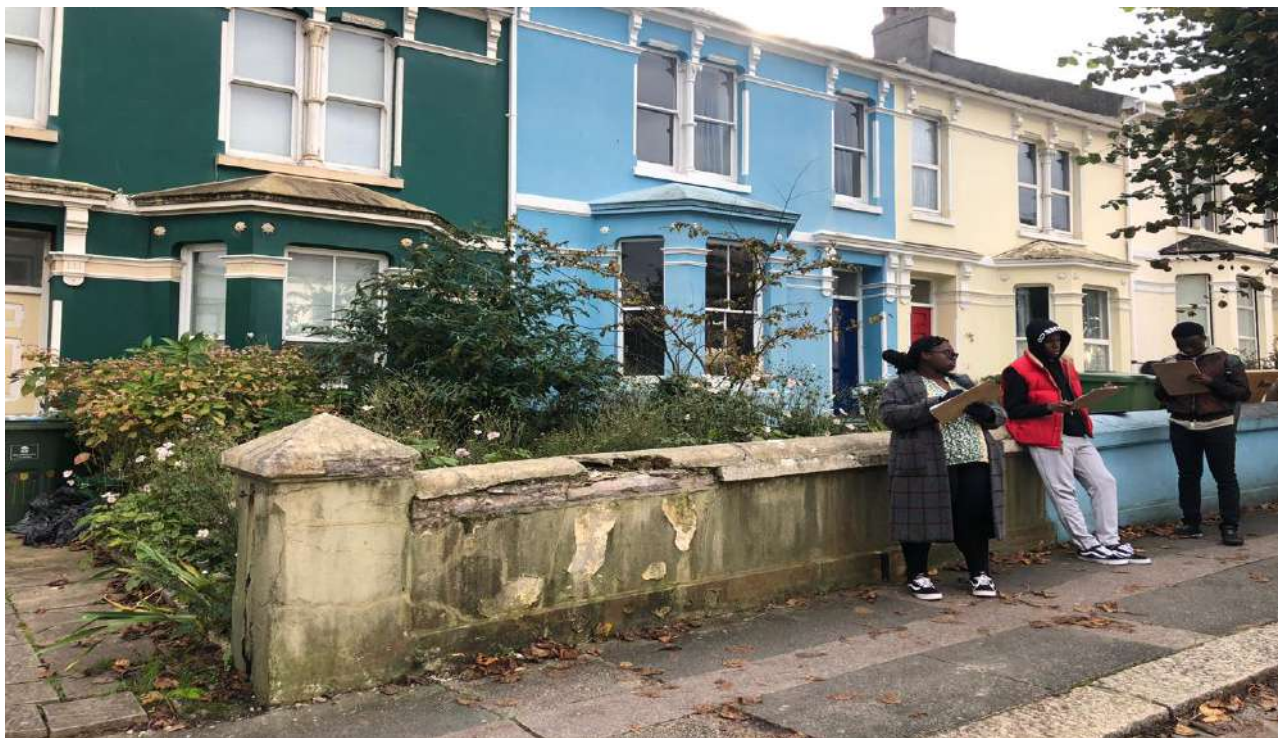


DAY 3: DATA COLLECTION

10 Biology and ESS Students went to the Slapton Woods and fresh water stream.

3 Geography students went to Plymouth to collect data on urban deprivation from three areas namely: Drake Circus, Mutley and Hartley.

9 Biology and ESS students went to the Slapton sands (Shingle Ridge) and the forest reserve.



DAY 4

The morning saw students working on their data analysis and write up with Emily, Emmanuel and Richmond.





CAS-SA Corner



Join Tema International School on a Folkloric Escapade with the Adaptation of *The Marriage of Anansewa*

It has remained an annual tradition that the **Tema International School (TIS)** community is treated to a stage play performance by students and staff. Last year, patrons of the National Theatre of Ghana were kept stage bound to the TIS' adaptation of *Beauty and the Beast*.

This year, the IB Class of 2020 at Tema International is embarking on a folkloric escapade with an adaptation of Efua Sutherland's, *The Marriage of Anansewa*. The play celebrates Ghanaian culture through storytelling, music and dance, and subtly criticises society's never-ending craving for materialism and disregard for due diligence.

The Marriage of Anansewa shows on **Friday, 1 November and Saturday, 2 November, 2019** at the **Main Campus of Tema International School**, at Tema Community 21. The show commences at **7.00 pm each day**. Admission is **GHC 20.00 for children and GHC 40.00 for adults**. Tickets can be obtained at the School's reception and at the gate.

All proceeds from the production go towards students' community service initiatives and projects, which include: ***Breast Cancer Awareness; We are Us (Autism Awareness); Climate Change Awareness/Action; Hand Washing Awareness by Interact Club; Construction of Libraries and Schools; Pen in a Box – Supplying Stationery for School Children; Opposing Kidnapping with Taekwondo; Building Playgrounds in Communities and Schools; Partnership with the Tetteh Ocloo School of the Deaf and other NGOs to improve Education and Health among Children; Sickle Cell Awareness, Educom Project; Christmas Outreach; Railway Line Street Children Literacy Programs; and Red Cross First Aid Awareness Campaign***, to name a few.

Save the date, **1 & 2 November, 2019**, and make it a point to see the very best display of a cultural performance.

The Marriage of Anansewa – **Sponsor a Child**



Would you like to sponsor a child (ren) to attend the upcoming TIS production, *The Marriage of Anansewa*? You can do so by purchasing tickets for children from orphanages and also nearby schools.

At GHC 20, we can give children the opportunity to enjoy another production of TIS students.

A huge thank you to our students' director Portia's Mummy who is sponsoring 100 children from the Ashaiman community. **To sponsor a child contact Ms. Abigail +233 54 393 6488**

TIS Annual Production on the Media

<https://www.youtube.com/watch?v=dZZP6uoGGGQ>

<https://www.etvghana.com/join-tema-international-school-on-a-folkloric-escapade-with-the-adaptation-of-the-marriage-of-anansewa/>

https://www.instagram.com/p/B347sY_JcD/?igshid=1byo49g445whu

Order your MOA T. Shirt – Contact Ms. Abigail at the CASSA office



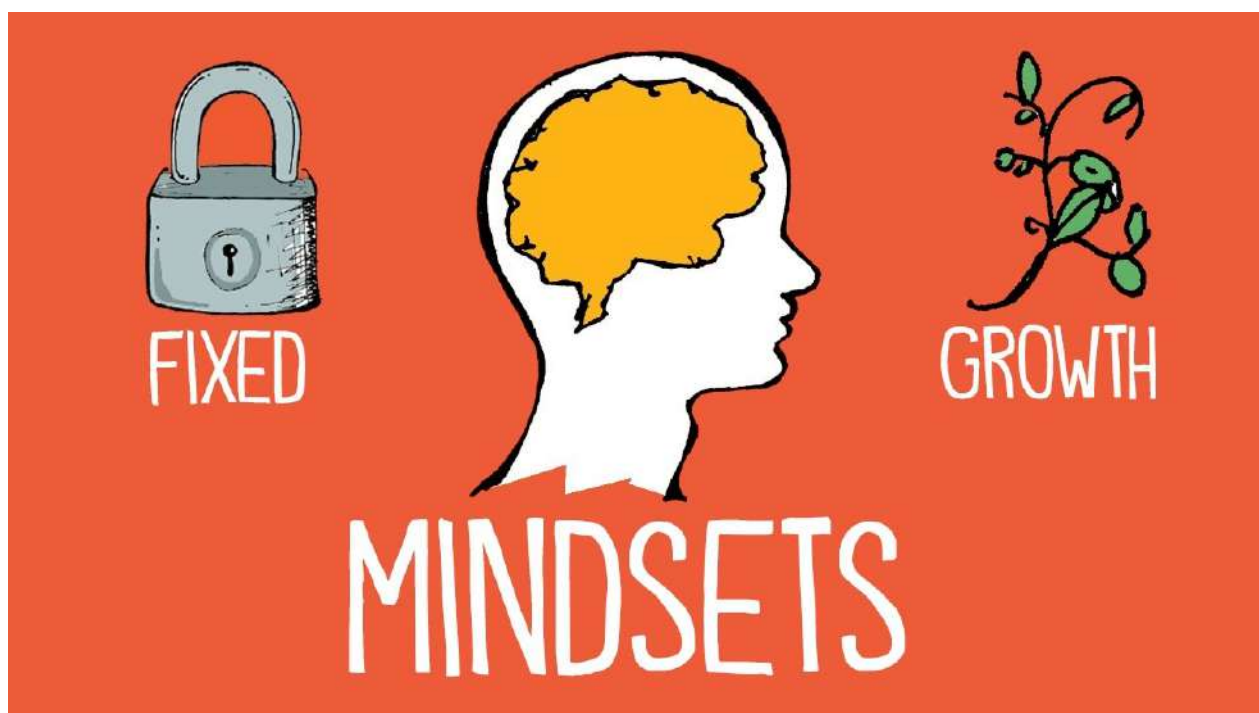
Creative Writing & Photography Workshop, 2019



The Marriage of Anansewa, behind the scenes



Growth Mind Set Corner



Stay updated - Save the TIS WhatsApp – 0503849799 - TIS: more than a school.



The graphic features the school's name at the top, followed by 'SOCIAL MEDIA' in a stylized font and 'Follow Us' in red. Below this, a list of social media handles and a WhatsApp number is provided, each preceded by its respective icon. The bottom section is decorated with various digital icons like a thumbs up, laptop, speech bubbles, and mobile phones displaying social media apps. The school's website URL is at the very bottom.

TEMA INTERNATIONAL SCHOOL

SOCIAL MEDIA Follow Us

-  @tema_international_school
-  @TISGhana @CAS_Coordinator
-  @TISGhana
-  Tema International School
-  0503849799

 www.tis.edu.gh

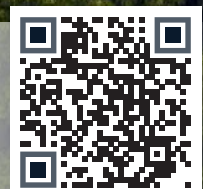
immerse
EDUCATION

**Win a 100% scholarship
to the award-winning
Cambridge Summer School**

Open to students aged 13-18 years old

Deadline: 20th January 2020

www.immerse.education/essay-competition



SCAN ME!

FOR FURTHER INFORMATION, VISIT WWW.IMMERSE.EDUCATION/ESSAY-COMPETITION/



ALAMAU

African Leadership Academy Model African Union

SOUTH AFRICA

14 -23 March 2020



What is **ALAMAU**?

African Leadership Academy Model African Union (ALAMAU) is an annual conference for young leaders from across Africa and around the world, simulating the activities of the African Union.

Delegates in ALAMAU serve as representatives of various African governments on ten organs of the African Union, affording them the opportunity to study complex African issues, understand the positions of African countries, and learn to successfully negotiate without compromising national interests. By emulating the roles of State dignitaries and diplomats, ALAMAU aims to empower young leaders to model international cooperation for development while celebrating diversity.

Who is eligible to attend **ALAMAU**?

All students between **14 and 19** years of age

Registration

- Cost per delegate: USD 3200 (three thousand two hundred US dollars)
- A non-refundable commitment fee of USD 200 (two hundred US dollars) must be paid by 8 November, 2019.
- Full payment and final registration is due on 5 December, 2019.
- All payments should be made to the School Account/Account Office and the scanned payment advice slip emailed to: Kwame_d@tis.edu.gh

Enquiries:

For further enquiries, please contact:
Mr. Ben Darko, +233 (0)244110355
(kwame_d@tis.edu.gh)

ALAMAU ~Developing the next generation of African Leaders~



TEMA INTERNATIONAL SCHOOL

CULTURE



At TIS, we believe that culture as one of the four pillars for student balance and ensuing success, develops and enhances the creative, artistic and performing skills and talents in each student.



EDUCATION FOR A BETTER WORLD