

# TIS RECORD

P: +233 303305134 | E: [info@tis.edu.gh](mailto:info@tis.edu.gh) | W: [www.tis.edu.gh](http://www.tis.edu.gh)

## At TIS,

We believe the four pillars for student balance and ensuing success - academics, service, sport and culture - provide a theoretical lens for inquiry, critical thinking, and conceptual understanding in a real-world context, through action.

## Contents

- CASSA News: Page 7

## Key Dates

- 11/8/25: SC executives return
- 13/8/25: Newbies arrive
- 17/8/25: Continuing secondary students resume.
- 18/8/25: All P-12 classes commence

## Thought for the Week

It's not that we don't have time. It's that we don't have time for the things that are really important.

There's always enough time to do what's really important, but we get caught up doing things that aren't important.

- Larry Winget



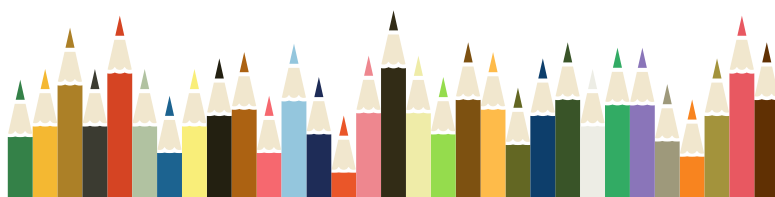
## Ready to Start/Return?

As the old adage goes, it's better to be prepared than to be sorry. So, with only 12 more days before our 2025 Secondary School Newbies commence (and 16 days for returning secondary students and 17 for Primary School students), it's time to start getting ready for the new academic year.

### *Main Campus (Secondary School)*

Our new secondary school students will commence on Wednesday, 13 August. Newby families should arrive from 11.00am to set their child/ren up in their dorms and be ready for a 'Welcome' meeting at 2.00pm. Parents will be required to depart by 4.30pm.

Continuing students will return to campus on Sunday, 17 August by 4.00pm.



"My definition of integrity is a set of beliefs, values, and actions that others can depend on."

-Steve Bollar

## Student Priorities

- Organise and set goals: a clear start builds momentum and reduces stress.
- Re-establish routines and healthy habits: consistency in sleep, meals and study routines supports focus and wellbeing.
- Prepare mentally and emotionally: a positive mindset helps students engage with learning and overcome challenges.

## Accounts

- When paying an amount into our school's account, always **ensure you use the student's family name and student ID as the payment reference.**

## SAT & ACT

- Best advice: Students who are required to complete SAT and/or ACT requirements should do so by the end of Grade 11. Leave it until G12 and you have created a personal time-management monster.
- Please follow the instructions and details provided in the weekly Counsellors' Corner.

**Student Council executives return on 11 August to prepare for the arrival of our Newbies.**

**\* Parents must advise by 11 August if a late start to the semester is required.**

### Primary School Campus

The Primary School classes will commence on Monday, 18 August. This will be preceded by a Meet the Teacher session on Friday, 15 August.

### ManageBac (MB)

All new parents and students have received a 'Welcome Email' from ManageBac (MB), which included instructions on setting their password and logging in to MB. This is our primary communication tool. You will receive an email each time about relevant notifications. Please email me if you have any issues accessing your MB account.

### Accounts

Please ensure the first semester fees are paid before commencing unless you have an approved payment plan.

I must receive payment plans for approval by Friday, 8 August. The first payment of any plan must be made by 15 August.

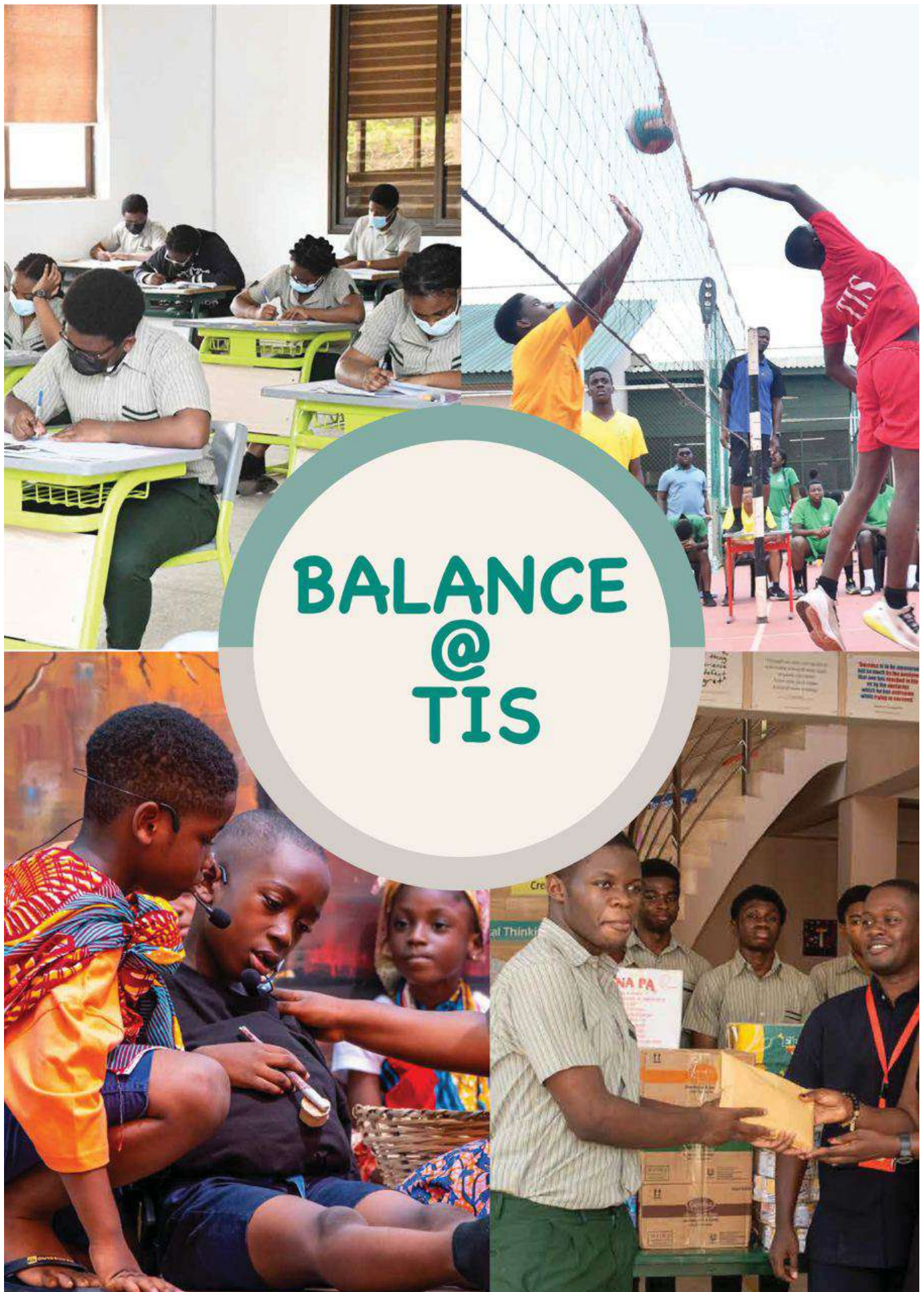
I appreciate your support. Enjoy each day as a blessing.

Dr Ken Darvall (Principal)

[principal@tis.edu.gh](mailto:principal@tis.edu.gh)







# TIS 2025/26 School Calendar

| August 2025 |    |    |    |    |    |    |
|-------------|----|----|----|----|----|----|
| Su          | Mo | Tu | We | Th | Fr | Sa |
|             |    |    |    |    | 1  | 2  |
| 3           | 4  | 5  | 6  | 7  | 8  | 9  |
| 10          | 11 | 12 | 13 | 14 | 15 | 16 |
| 17          | 18 | 19 | 20 | 21 | 22 | 23 |
| 24          | 25 | 26 | 27 | 28 | 29 | 30 |
| 31          |    |    |    |    |    |    |

| September 2025 |    |    |    |    |    |    |
|----------------|----|----|----|----|----|----|
| Su             | Mo | Tu | We | Th | Fr | Sa |
|                | 1  | 2  | 3  | 4  | 5  | 6  |
| 7              | 8  | 9  | 10 | 11 | 12 | 13 |
| 14             | 15 | 16 | 17 | 18 | 19 | 20 |
| 21             | 22 | 23 | 24 | 25 | 26 | 27 |
| 28             | 29 | 30 |    |    |    |    |
|                |    |    |    |    |    |    |

| October 2025 |    |    |    |    |    |    |
|--------------|----|----|----|----|----|----|
| Su           | Mo | Tu | We | Th | Fr | Sa |
|              |    |    | 1  | 2  | 3  | 4  |
| 5            | 6  | 7  | 8  | 9  | 10 | 11 |
| 12           | 13 | 14 | 15 | 16 | 17 | 18 |
| 19           | 20 | 21 | 22 | 23 | 24 | 25 |
| 26           | 27 | 28 | 29 | 30 | 31 |    |
|              |    |    |    |    |    |    |

| November 2025 |    |    |    |    |    |    |
|---------------|----|----|----|----|----|----|
| Su            | Mo | Tu | We | Th | Fr | Sa |
|               |    |    |    |    |    | 1  |
| 2             | 3  | 4  | 5  | 6  | 7  | 8  |
| 9             | 10 | 11 | 12 | 13 | 14 | 15 |
| 16            | 17 | 18 | 19 | 20 | 21 | 22 |
| 23            | 24 | 25 | 26 | 27 | 28 | 29 |
| 30            |    |    |    |    |    |    |

| December 2025 |    |    |    |    |    |    |
|---------------|----|----|----|----|----|----|
| Su            | Mo | Tu | We | Th | Fr | Sa |
|               | 1  | 2  | 3  | 4  | 5  | 6  |
| 7             | 8  | 9  | 10 | 11 | 12 | 13 |
| 14            | 15 | 16 | 17 | 18 | 19 | 20 |
| 21            | 22 | 23 | 24 | 25 | 26 | 27 |
| 28            | 29 | 30 | 31 |    |    |    |
|               |    |    |    |    |    |    |

| January 2026 |    |    |    |    |    |    |
|--------------|----|----|----|----|----|----|
| Su           | Mo | Tu | We | Th | Fr | Sa |
|              |    |    |    | 1  | 2  | 3  |
| 4            | 5  | 6  | 7  | 8  | 9  | 10 |
| 11           | 12 | 13 | 14 | 15 | 16 | 17 |
| 18           | 19 | 20 | 21 | 22 | 23 | 24 |
| 25           | 26 | 27 | 28 | 29 | 30 | 31 |
|              |    |    |    |    |    |    |

| February 2026 |    |    |    |    |    |    |
|---------------|----|----|----|----|----|----|
| Su            | Mo | Tu | We | Th | Fr | Sa |
| 1             | 2  | 3  | 4  | 5  | 6  | 7  |
| 8             | 9  | 10 | 11 | 12 | 13 | 14 |
| 15            | 16 | 17 | 18 | 19 | 20 | 21 |
| 22            | 23 | 24 | 25 | 26 | 27 | 28 |
|               |    |    |    |    |    |    |
|               |    |    |    |    |    |    |

| March 2026 |    |    |    |    |    |    |
|------------|----|----|----|----|----|----|
| Su         | Mo | Tu | We | Th | Fr | Sa |
| 1          | 2  | 3  | 4  | 5  | 6  | 7  |
| 8          | 9  | 10 | 11 | 12 | 13 | 14 |
| 15         | 16 | 17 | 18 | 19 | 20 | 21 |
| 22         | 23 | 24 | 25 | 26 | 27 | 28 |
| 29         | 30 | 31 |    |    |    |    |
|            |    |    |    |    |    |    |

| April 2026 |    |    |    |    |    |    |
|------------|----|----|----|----|----|----|
| Su         | Mo | Tu | We | Th | Fr | Sa |
|            |    |    | 1  | 2  | 3  | 4  |
| 5          | 6  | 7  | 8  | 9  | 10 | 11 |
| 12         | 13 | 14 | 15 | 16 | 17 | 18 |
| 19         | 20 | 21 | 22 | 23 | 24 | 25 |
| 26         | 27 | 28 | 29 | 30 |    |    |
|            |    |    |    |    |    |    |

| May 2026 |    |    |    |    |    |    |
|----------|----|----|----|----|----|----|
| Su       | Mo | Tu | We | Th | Fr | Sa |
|          |    |    |    |    | 1  | 2  |
| 3        | 4  | 5  | 6  | 7  | 8  | 9  |
| 10       | 11 | 12 | 13 | 14 | 15 | 16 |
| 17       | 18 | 19 | 20 | 21 | 22 | 23 |
| 24       | 25 | 26 | 27 | 28 | 29 | 30 |
| 31       |    |    |    |    |    |    |

| June 2026 |    |    |    |    |    |    |
|-----------|----|----|----|----|----|----|
| Su        | Mo | Tu | We | Th | Fr | Sa |
|           | 1  | 2  | 3  | 4  | 5  | 6  |
| 7         | 8  | 9  | 10 | 11 | 12 | 13 |
| 14        | 15 | 16 | 17 | 18 | 19 | 20 |
| 21        | 22 | 23 | 24 | 25 | 26 | 27 |
| 28        | 29 | 30 |    |    |    |    |
|           |    |    |    |    |    |    |

| July 2026 |    |    |    |    |    |    |
|-----------|----|----|----|----|----|----|
| Su        | Mo | Tu | We | Th | Fr | Sa |
|           |    |    | 1  | 2  | 3  | 4  |
| 5         | 6  | 7  | 8  | 9  | 10 | 11 |
| 12        | 13 | 14 | 15 | 16 | 17 | 18 |
| 19        | 20 | 21 | 22 | 23 | 24 | 25 |
| 26        | 27 | 28 | 29 | 30 | 31 |    |
|           |    |    |    |    |    |    |

## Public holidays 2025/26

|              |                 |              |                   |              |                   |
|--------------|-----------------|--------------|-------------------|--------------|-------------------|
| 4 Aug, 2025  | Founders' Day   | Jan 1, 2026  | New Year's Day    | 3 Apr, 2026  | Good Friday       |
| 22 Sep, 2025 | KN Memorial Day | 7 Jan, 2026  | Constitution Day  | 6 Apr, 2026  | Easter Monday     |
| 5 Dec, 2025  | Farmers' Day    | 6 Mar, 2026  | Independence Day  | 1 May, 2026  | May Day           |
| Dec 25, 2025 | Christmas Day   | 20 Mar, 2026 | Eid Al Fitr (TBC) | 27 May, 2026 | Eid Al-Adha (TBC) |

Dates and/or events are subject to changes.



**FIRST SEMESTER**

|              |   |
|--------------|---|
| 1/8/25       | 2025 MYP Results Released; 2025 MYP Enquiries Upon Results Open;                                      |
| 1/8/25       | MYP PP: Final product (photo evidence upload)   |
| 5/8/25       | All staff resume  |
| 11/8/25      | Student Council executives return   |
| 13/8/25      | Newbies arrive (Meeting @ 2.00pm)   |
| 15/8/25      | PYP Meet the teacher session (1.30pm)   |
| 16/8/25      | Personal Project: Criterion B draft due   |
| 17/8/25      | Continuing secondary students resume  |
| 18/8/25      | All P-12 classes commence   |
| 22/8/25      | TIS Junior Soccer Championships   |
| 23/8/25      | SAT   |
| 24/8/25      | School Performance auditions  |
| 29/8/25      | TIS Senior Soccer Championships   |
| 30/8/25      | Peer Buddies Workshop. <b>NO EXEATS FOR NEWBIES.</b>  |
| 31/8/25      | Thanksgiving Service (11.00am) <b>NO EXEATS</b>   |
| 6/9/25       | TIS Tennis Championships/TIS Badminton Championships;   |
| 6/9/25       | PYP Parents training session (9.00am); ACT  |
| 10-11/9/25   | PYP Evaluation Visit  |
| 11/9/25      | G12 TOK Exhibition  |
| 12/9/25      | MYP PP Criterion B final due  |
| 13/9/25      | SAT; MYP & DP Parents Information sessions. <b>NO EXEATS (Until after these sessions)</b>             |
| 19/9/25      | PYP End of Unit 1 #WI; DP Geography Excursion   |
| 20/9/25      | TIS Sporty Family. <b>NO EXEATS</b>   |
| 26/9/25      | MYP CP: Community tour  |
| 27/9/25      | TIS Handball Championships; High School Praise (Praise Night Fundraiser)                              |
| 28/9-5/10/25 | 22 <sup>nd</sup> Anniversary TIS Spirit Week. Career Fair <b>NO EXEATS</b>                            |
| 3/10/25      | TIS Founders' Day. Main Campus admissions open for 2025/2027  |
| 4/10/25      | SAT;  |
| 5/10/25      | 22 <sup>nd</sup> Anniversary Thanksgiving Service. <b>NO EXEATS until after 1.00pm)</b>               |
| 6-11/10/25   | Mid-semester break  |
| 11/10/25     | ISSAG Football  |
| 12/10/25     | Students return to hostels  |
| 13/10/25     | All classes resume after mid-semester   |
| 14/10/25     | G9/G11 Changes to Subject Selections close; DP Geography Data Excursion                               |
| 18/10/25     | ISSAG Football, Handball, Tennis; ACT   |
| 19-25/10/25  | Sankofa 2025: Cross Cultural Arts Festival (G11 only)   |
| 20/10/25     | MYP PP: Criterion C draft due   |
| 20/10/25     | Student Council (SC) shadowing process commences;   |
| 21/10/25     | G12 EE Café   |
| 23/10/25     | Girls Volleyball Championships (during ASA)   |
| 24/10/25     | Boys Volleyball Championships (during ASA)  |
| 25/10/25     | PSAT: ISSAG Football, Handball, finals  |
| 26/10/25     | TIS swimming championships (3.00 – 5.00pm)  |
| 28-29/10/25  | I&S Celebration Days  |
| 31/10/25     | PYP End of Unit 2 Celebrations; Submission of G12 TOK Draft Essay; Language competition (7-12)        |
| 1/11/25      | ISSAG Volleyball, Swimming and Badminton  |
| 3/11/25      | DP Business Management Excursion  |
| 8/11/25      | SAT; <b>Annual Production NO EXEATS</b>   |
| 11-12/11/25  | Collaborative Sciences Project – G12;   |
| 14/11/25     | PYP Book Day  |
| 17-21/11/25  | MYP5 On-screen examination (Reports due 5/12/25) No exeats for G10                                    |
| 19-28/11/25  | <b>G11-12 end of semester exams (Reports due 5/12/24) No exeats for G11-12</b>                        |
| 24/11/25     | MYP CP: Presentation of objectives  |
| 28/11/25     | PYP End of Unit 3 3WI;  |
| 29/11/25     | MYP PP Criterion C completion; Peer Buddies Workshop  |
| 30/11/25     | Choral Night (Chaplaincy)   |
| 1/12/25      | SC applications open for 2024 elections   |
| 6/12/25      | SAT   |
| 8/12/25      | Christmas Lunch   |
| 9/12/25      | MYP PP Final Report due: photo evidence & bibliography upload   |
| 10/12/25     | Last day for the first semester: Students may depart after 3-Way interviews or 1.00pm if no interview |
| 12/12/25:    | Last day for teachers   |
| 13/12/25     | ACT   |

**SECOND SEMESTER**

|              |   |
|--------------|---|
| 6/1/26       | Staff Wellbeing Retreat   |
| 8-9/1/26     | Staff training days   |
| 11/1/26      | Students return to hostels; applications for 2024 SC positions close                            |
| 12/1/26      | Second semester commences.  |
| 12-18/1/26   | Alumni Homecoming Week  |
| 17/1/26      | TIS Athletics Championships. <b>NO EXEATS BEFORE 1.00PM</b>                                     |
| 18/1/26      | Alumni Thanksgiving Service   |
| 19/1/26      | SC Manifesto Readings   |
| 20/1/26      | 2026 Student Council elections by voting (7.00am-4.00pm)  |
| 24/1/26      | ISSAG Basketball, Table Tennis and Hockey.  |
| 28-30/1/26   | IDU Days; G12 EE; G11 EE, 11/12 CAS Reflection Day  |
| 31/1/26      | SC Leadership Camp <b>NO EXEATS FOR SCHOOL LEADERS</b> ; ISSAG Basketball, TT & Hockey D2       |
| 1/2/26       | Student Leadership Induction Ceremony <b>NO EXEATS</b>  |
| 7/2/26       | Creative Writing Workshop   |
| 9-13/2/26    | MYP5 Mock On-screen examination <b>NO G10 EXEATS</b>  |
| 12/2/26      | G11 TOK Exhibition. <b>NO G11 EXEATS</b>  |
| 13/2/26      | PYP End of Unit 4 #WI; Early Years Family Day; TIS Squash Championships;                        |
| 14/2/26      | Peer Buddies Workshop; Chocolate Friendship Day   |
| 16-27/2/26   | DP Mocks. <b>NO G12 EXEATS</b>  |
| 25/2/26      | MYP PP standardisation and moderation (teachers)  |
| 27-28/2/26   | <del>ISSAG Athletics;</del>   |
| 7/3/26       | MYP Projects (Personal & Community) <b>NO EXEATS (until after this session)</b>                 |
| 11/3/25      | PYP – MYP Info Day at Main Campus   |
| 12/3/26      | G11 TOK Exhibition. <b>NO G11 EXEATS</b>  |
| 14/3/26      | SAT; Pi Day   |
| 20/3/26      | MYP PP: Academic Honesty First Record   |
| 21/3/26      | 2026 STEAM Day <b>NO EXEATS (until after the event)</b>   |
| 27/3/26      | PYP End of Unit 5 Unit Celebrations; Three-way interviews: Students depart AFTER interviews     |
| 28-30/3/26   | DP Geography Field Trip   |
| 28/3-12/4/26 | Mid-semester break  |
| 31/3/26      | MYP PP Criterion A draft due; Draft 2026/2027 Calendar Overview Released                        |
| 11/4/26      | ACT   |
| 12/4/26      | Students return to hostels  |
| 13/4/26      | All classes resume after mid-semester;  |
| 17/4/26      | G11 EE Cafe   |
| 18/4/26      | G12 Grad photos (All day). <b>NO G12 EXEATS</b> ; MYP5 Examprep workshop <b>(NO G10 EXEATS)</b> |
| 19/4/26      | Exam Candidates' Service <b>NO EXEATS</b>   |
| 21/4/26      | MYP5->DP1 info session; PP Criterion A draft due  |
| 24/4-22/5/26 | DP Final Exams  |
| 24/4/26      | PYP Spelling Bee  |
| 2/5/26       | SAT   |
| 4/5/26       | MYP PP Criterion A final due  |
| 4-15/5/26    | MYP IBMYP On-screen examination   |
| 16-30/5/26   | Break for MYP5 leavers ( <b>Leavers return to Hostels on 30/5/26 by 5.00 pm</b> )               |
| 18-29/5/26   | G11 semester exams; G10 classes resume (compulsory attendance).                                 |
| 20-26/5/26   | MYP4 On-screen examination  |
| 21/5/26      | PYP End of Unit 6 3WI   |
| 22/5/26      | PYPX & VAX  |
| 23/5/26      | Leavers' Dinner   |
| 29/5/26      | MYP4 (2025/2026) subject selections   |
| 30/5/26      | 2026 PYP Annual Achievers & Graduation Ceremony; Last day for PYP Students                      |
| 31/5/26      | Peer Buddies Workshop   |
| 5/6/25       | Last day for PYP staff  |
| 6/6/26       | 2026 MYP/DP Annual Achievers and Graduation Ceremony; Last day for MYP/DP Students              |
| 12/6/26      | Last day for teachers; S2 reports published.  |
| 13/6/26      | ACT   |
| 20/6/26      | France/Spain trips commence   |
| 11/7/26      | ACT; France/Spain trips end   |
| 25/7/26      | MYP PP: Final Product (Photo evidence upload)   |

V 210525

## CAS-SA Corner



Dear Students,

We trust you're enjoying your long break! We're looking forward to welcoming you back to campus soon, ready for another amazing ride with our TIS family.

Kindly read below a message from the Organising Committee for **TIS @ 22**. The **IB Class of 2027** has been working tirelessly to bring you a memorable celebration of our school's anniversary and the legacy of our Founders.

Please note that this is a tentative plan and some details may change slightly. The full programme for the major events will be shared in due course.

For now, the goal is to get you thinking creatively and preparing ahead. We kindly urge parents and students *not* to overspend on outfits. **Spirit Week** is all about fun, creativity, and bonding. We'll be on the lookout for the most **creative** and **resourceful** outfits, not the most expensive!

Bring your outfits, your energy, and the TIS spirit of togetherness that defines our community.

See you soon!

**Mama Su**  
**CAS & Events Coordinator**



## TIS @ 22 – Time to Prepare for the Best Spirit Week Ever



Our school is turning **22 years** young this October, and you already know what that means... It's time to CELEBRATE – the TIS way!

Mark your calendars, plan your outfits, and get ready to show up and show out for a week packed with fun, community spirit, and purpose – all led by us, the IB Class of 2027, your amazing DP1s.

😊 This is part of our CAS journey, and we're ready to make it unforgettable.

Here's the line-up of events and dress codes so you can start prepping (while enjoying what remains of your summer break):

### Saturday, 20 September – **Sporty Family Day 25**

Kick things off with movement and fun – bring your energy, rep your colour group, and let the games begin! (Get all the paraphernalia you can in your colour.)

**Dress Code:** Sportswear (In your colour group – Blue Cedar, Green Wisteria, Red Kigelia, Yellow Outeniqua)

### Saturday, 27 September – **Gospel Concert** (in collaboration with Nii Okai – High School Praise2025)

A night of soul, music, purpose, and gratitude. *Nii Okai's Saving Hearts Foundation* will be raising funds for children with congenital heart disorders. Schools across Ghana will be joining us for this purpose-driven event. Let's come together and help save hearts.

**Dress Code:** Wear your event T-shirt and Jeans (link to order T-shirt will be shared soon).



## Monday, 29 September – **My Aesthetic Day**

Be YOU, or be who you feel like being. From cottagecore to tech wear, the runway is yours.

**Dress Code:** Show up in a full look that expresses your personal aesthetic or mood for the day.

Whether it's *streetwear, cottagecore, dark academia, retro, techwear, or something entirely your own* — make it intentional, stylish, and authentic to you. It's not just about fashion, it's about owning your vibe.

## Tuesday, 30 September – **Nollywood vs Hollywood**

Pick your side. Bring the glam. Be a star.

**Dress Code:** Nollywood drama or Hollywood red carpet chic. Props, accessories, and bold energy are welcome; go full star power.

## Wednesday, 1 October – **Career Fair**

The TIS Career Fair is back! What problem do you want to solve in the world? What's your mission? Let these questions guide your outfit and vision.

Get ready for an insightful day; professionals from different fields, including TIS alumni, parents, etc., will be on campus to engage with you, and special guests will be joining us to share valuable insights on future careers and the skills needed to thrive **in today's world**.

**Dress Code:** Dress as your future self. Think beyond just uniforms; what does someone in your dream career role actually look like? Whether you're a creative, entrepreneur, researcher, doctor, or artist, bring your vision to life through your look.

## Thursday, 2 October – **Inside Out & All Around**

Nothing makes sense... and that's the point.

**Dress Code:** Mismatched, reversed, flipped – wear your clothes like your wardrobe betrayed you.



## Friday, 3 October –

## **International Met Gala: A Night of Legacy and Culture**

We celebrate our founders' legacy and the spirit of TIS through an unforgettable evening of poetry, literature, dance, music, and African food. This is a night to honour our diverse roots and proudly showcase our international identity with a special focus on Pan-Africanism.

**Dress Code:** Come dressed in the

traditional attire of your country or any African culture you admire. Think **Met Gala meets Motherland**; bold, elegant, and expressive. It's not about how expensive your outfit is, but how creative and meaningful your look can be.

## Sunday, 5 October – Thanksgiving Service – International Teachers' Day

We end the week in gratitude – a time for reflection, community, and joy.

**Dress Code:** All white, with a touch of your favourite colour (accessory, shoes, or detail). Keep it elegant and respectful for a day of reflection and gratitude.

**TIS @ 22** is more than a celebration – it's our story, our journey, and our pride. While you're enjoying your summer, keep these dates in mind and plan your looks ahead. We can't wait to celebrate with you. Let's make it unforgettable.

**TIS @ 22 – Student Planning Committee**

***Bruhan-Deen, Shandel, LesleyAnn*** – Main Leaders

*IB Class of 2027 – DP1s*

\*If you need further clarification, email [tis\\_spiritweek@tis.edu.gh](mailto:tis_spiritweek@tis.edu.gh)

#TISat22 #SpiritWeekVibes #ProudlyTIS







# **Tema International School CAREER FAIR 2025**

**IMAGINE IT. WEAR IT. BECOME IT!**



## **REP YOUR CAREER @ TIS SPIRIT WEEK**

# TIS ADMISSION PROCESS

## KEY QUESTIONS

- ✓ Why does your child want to come to TIS?
- ✓ How will your child take advantage of the TIS experience?
- ✓ As a parent, why are you applying?

## DUE DILIGENCE

- ✓ Go to [tis.openapply.com](https://tis.openapply.com)
- ✓ Familiarise yourself with all aspects of the admissions process, including fees.
- ✓ Is this the right school for your child?

## APPLICATION

- ✓ Go to: <https://tis.openapply.com>
- ✓ Complete an online admissions application and include all required documents.
- ✓ Pay the application fee.

## BOOK A TOUR OF TIS

- ✓ Allow 30-45 minutes for the tour.
- ✓ Be prepared to be surprised when you discover West Africa's best kept secret!

## TEST AND INTERVIEW

- ✓ Your child will have to complete an online test.
- ✓ An online interview will be conducted after the test has been completed.

## APPLICATION DECISION

- ✓ If an admission offer is made, you will have 21 days to accept or decline the offer.
- ✓ Otherwise, you will be informed if your child has been unsuccessful or placed on the waiting list.

## NEED HELP OR IF YOU HAVE MORE QUESTIONS

- ✓ Please email: [admissions@tis.edu.gh](mailto:admissions@tis.edu.gh)
- ✓ Please call: +233 303 305134  
+233 24 963 7762



# TIS Admissions Grade Chart

| TIS      |     | British Curriculum Schools |
|----------|-----|----------------------------|
| Kinder 1 | PYP | Nursery                    |
| Kinder 2 |     | Reception                  |
| Kinder 3 |     | Year 1                     |
| Grade 1  |     | Year 2                     |
| Grade 2  |     | Year 3                     |
| Grade 3  |     | Year 4                     |
| Grade 4  | MYP | Year 5                     |
| Grade 5  |     | Year 6                     |
| Grade 6  |     | Year 7                     |
| Grade 7  |     | Year 8                     |
| Grade 8  | DP  | Year 9                     |
| Grade 9  |     | Year 10                    |
| Grade 10 |     | Year 11                    |
| Grade 11 |     | Year 12                    |
| Grade 12 |     | Year 13                    |



# TEMA INTERNATIONAL SCHOOL



## Primary School Campus

Admissions Open For 2025/2026 Academic Year

Flexible admission screenings and interviews



### Entry Points in 2025

#### Preschool

Nursery (1.9 years @ August 2025)  
Kinder 1 (2.9 years @ August 2025)  
Kinder 2 (3.9 years @ August 2025)  
Kinder 3 (4.9 years @ August 2025)

#### Junior Primary

Grade 1 (5.9 years @ August 2025)  
Grade 2 (6.9 years @ August 2025)  
Grade 3 (7.9 years @ August 2025)

#### Senior Primary

Grade 4 (8.9 years @ August 2025)  
Grade 5 (9.9 years @ August 2025)  
Grade 6 (10.9 years @ August 2025)

All admission applications will be online via Open Apply:  
<https://tis.openapply.com>

A social readiness screening will be required, as part of the admission process, along with a compulsory interview with parents.

TIS is an IB World School, authorised to offer PYP, MYP and DP.

To learn more  
scan this.



To enrol scan  
this.







# Tema International School



## MAIN CAMPUS

**SECONDARY ADMISSIONS ARE OPEN FOR 2025/2026 ACADEMIC YEAR  
FROM 3 OCTOBER 2024 UNTIL 31 MARCH 2025**

*A family school, a unique experience.*

**Flexible online admission testing is available**

**ENTRY POINTS:** Grade 7 (MYP 2) | Grade 8 (MYP 3) | Grade 9 (MYP 4) | Grade 11 (IB Diploma Programme)

### Grade 7 (MYP 2)

Students should:

- a) Have completed Primary 6.
- b) Be aged 11+(at the time of admission).
- c) Complete a general aptitude test and interview.

### Grade 8 (MYP 3)

Students should:

- a) Have completed JHS 1 or in JHS 2.
- b) Be aged 13+(at the time of admission).
- c) Complete a general aptitude test and interview.

### Grade 9 (MYP 4)

Students should:

- a) Have completed Grade 8 or Basic Education Certificate Examination (BECE).
- b) Be aged 14+(at the time of admission).
- c) Complete a general aptitude test and interview.

### Grade 11 (IB Diploma Programme)

Students should:

- a) Have successfully completed MYP 5, the IGCSE (Or its equivalent) or awaiting the results of the IGCSE.
- b) Be aged 16+(at the time of admission).
- c) Complete a general aptitude test and interview for non IGCSE & GCSE students (i.e. WASSCE, OCR, AQA).

To learn more  
scan this.



To enrol scan  
this.



The online application process can be completed at: <https://tis.openapply.com>

For further information contact us on phone:

+233 303 305134, +233 303 308737, +233 249 637762 email: [admissions@tis.edu.gh](mailto:admissions@tis.edu.gh)

Or come and visit the school (Opp Afariwa Farms, Off Tema-Akosombo Road)

[www.tis.edu.gh](http://www.tis.edu.gh)

# **TIS INTEGRITY Code**

**“TIS, as a family school that provides unique experiences,  
embodies a spirit of integrity and respect for others  
which are central to the personal,  
academic and ethical development of each member.**

**As a TIS family member,  
I promise to uphold and demonstrate its values,  
and protect the reputation of the school.  
I make this pledge in the spirit of honour and trust.”**





