



TEMA INTERNATIONAL SCHOOL



Profile

 P. O. Box CO 864, Tema, Ghana

 Primary School Campus, C. 22 & Main Campus, C. 21.

 + 233 30 330 5134 / + 233 30 330 8737 / +233 24 963 7762

 info@tis.edu.gh

 www.tis.edu.gh

 TISGhana

 TIS_Ghana

General Manager | **Mrs. Cecilia Ajavon-Oppan**

Dep. General Manager/
Head of Admissions & Student Support |
Mrs. Frances Ajavon-Okudzeto

Principal | **Ms Yvonne-Marie Tagoe**

Diploma Programme Coordinator | **Mr. Eric Fudzagbo**

Middle Years Programme Coordinator | **Mr. Jerry Owiredo Darko**

KEY PERSONNEL



Primary Years Programme Coordinator |
Mr. Jacob Lumumba

Head of Admin | **Mr. Eddy Torkornoo**

Head of Finance | **Mr. Kobina Quansah**

Boys' Hostel Coordinator | **Mr. Dennis Akortah**
Girls' Hostel Coordinator | **Ms. Setor Adih**

➤ **PSAT Centre No.: 617140 CEEB: 617140 UCAS: 45646 SAT Centre No.: 77650 ACT Centre No.: 870390** ◀

OUR MISSION

Tema International School seeks to:

- Provide an excellent and diverse education for all, irrespective of nationality ethnicity, creed or gender.
- Draw on the cultural diversity of the school community as a foundation for building universal human values.
- Develop the spirit of inquiry in all our students as a fundamental tool for encouraging critical thinking and stimulating intellectual development.
- Create a safe and supportive environment which promotes self-discipline, honesty, integrity and excellence in learning.

We believe that the young adults who graduate from TIS possess the knowledge and relevant skills to unlock opportunities and contribute meaningfully to their communities.

OUR VISION

To be an international school of choice, nurturing world class citizens responsive to the needs of society.



BACKGROUND

Tema International School is a private coeducational K-12 school situated some two kilometres north of the port city of Tema which lies on the Greenwich meridian. The new Primary School Campus, located one kilometre from the main campus is an authorised PYP School. The main campus offers secondary boarding opportunities in MYP and DP.

The secondary school opened in 2003 and was established to provide a holistic education that complements the National Education System and facilitates admission into universities all over the world.

The language of instruction is English.



ENROLMENT

The student population now stands at 376.

The age range of students is as follows:

Grades K1-6	3-12 years	PYP
Grades 7-10	12-16 years	MYP
Grades 11-12	16-19 years	DP

Currently students in TIS come from 10 different countries around the world. The majority are Ghanaian. The average class size is 15.



FACULTY

There are experienced, highly qualified and motivated faculty who are concerned about the wellbeing of each student and are aware that teaching and learning extends beyond the classroom.

MAIN CAMPUS FACILITIES

On a 10-acre campus:

- There are 4 hostels for boarders with common and study rooms.
- An ultra-modern learning centre which has the capacity to stock 22,000 volumes of books, houses the university placement office and private/group study room.
- Air-conditioned classrooms surrounded by attractive well-tended gardens including subject, departmental and coordinators offices.
- A resource centre housing four science labs. Computer labs and e-learning centres with over 80 computers and 150mb dedicated fibre optics internet access.
- Free wifi service across the school.
- A multi-purpose/dinning hall.
- A project centre which houses the media room, dance room, an ultra-modern kitchen and the CAS-SA office.
- Music, art and theatre studios.
- A sports complex which includes a full-size football pitch, basketball, volleyball, tennis and squash courts, swimming pool and gym.



THE PRIMARY SCHOOL CAMPUS



Stage 1 facilities include:

- Open flexible learning area for three preschool classes;
- washroom facilities for preschool students;
- open flexible learning area for three junior primary classes;
- washroom facilities for junior primary students;
- arts facilities;
- tablets / computers in learning area;
- security - Wifi and CCTV;
- three administration offices;
- cafeteria (lunch room);
- kitchen preparation area and store rooms;
- teachers' staff room;
- IT server room;
- white boards and projectors; and
- Three learning spaces,
- Music room,
- Art room,
- Infirmary
- Storage spaces,
- Bath rooms and
- Playground.

BOARDING ACCOMMODATION (MAIN CAMPUS)

Usually six students share a spacious self-contained room with two toilets and two bathrooms. Hostel parents supervise these hostels and have their apartments within the boarding houses. They provide pastoral care to students, playing the roles of parents and mentors.

There are Reading Rooms and Common Rooms in the Boys' and Girls' Hostels. In each Common Room, the television is connected to DSTV.

Each hostel has a laundry and ironing room.

An emergency generator is used when there are power failures.

CALENDAR

The school year commences in August and ends in June. The annual calendar of events is provided to the school



TIS



4 Pillars

- *Academics*
- *Sports*
- *Culture*
- *Service*

CLASS RANK

At TIS, students are not class-ranked numerically. Instead, emphasis is placed on student effort and achievement.

The IB PRIMARY Years Programme (PYP)



TIS is now authorised to offer the Primary Years Programme (IBPYP), for 3 to 12 year olds. As a student-centred programme with responsible action at its core, the PYP focuses on developing internationally-minded learners through an inquiry-based approach. It emphasizes the holistic development of the child, equipping them to think for themselves and take responsibility for their own learning.

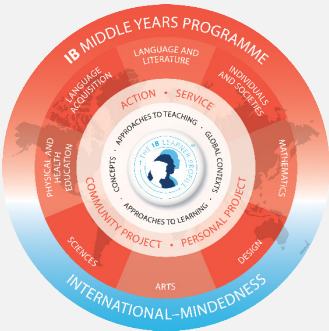
By honing students' transdisciplinary skills, and incorporating local and global issues into the programme of inquiry, students mirror the IB learner profile, becoming active, caring, lifelong learners, who demonstrate respect for themselves and others, and take positive action in the world around them.

These objectives are achieved through the exploration of Six broad themes: (Who We Are, Where We are in Place and Time, How We Express Ourselves, How the world Works, How We Organize Ourselves and Sharing the Planet) which look at connections and applications across the following disciplines:

- Languages: English; Sign Language, Mandarin, French, Ewe/Twi/Ga
- Mathematics
- Science
- Social Studies
- Arts: Performing Arts-Dance/Drama, Music Creative Arts-Visual Arts
- P.S.P.E (Personal, Social & Physical Education) and
- ICT (Information & Communication Technologies)

By this transdisciplinary approach, the PYP makes learning meaningful, engaging, challenging and significant.

The IB Middle Years Programme (MYP)



Tema International School is authorised to offer the Middle Years Programme. As an IBMYP World School, we share a common philosophy—a commitment to high quality, challenging, international education that Tema International School believes is important for our students.

The curriculum for the Middle Years (7-10), will prepare students for further education towards the IB Diploma Programme.

TIS offers pathways through MYP e-assessments, e-portfolios and completion of MYP core requirements including a Personal Project.

MYP Model

- Language and Literature: English
- Language Acquisition: French & Spanish
- Individuals and Societies: History, Geography, Economics
- Sciences: Integrated Science, Biology, Chemistry, Physics
- Mathematics
- Design: Digital Design and Product Design
- Physical and Health Education
- Arts: Visual Arts, Music, Theatre



GRADES 7-8 (MYP 2-3)

Students experience all subjects, except Theatre when in Grade 7. Grade 8 students have the opportunity to experience Product as well as Digital design. Grade 8 will complete a Community Project.

GRADES 9/10 (MYP 4-5)

Students must choose a minimum of six or maximum of eight subjects. Subject choices should reflect students' aspirations for university as well as their abilities. Students considering science or medical studies must choose all three MYP science subjects (Biology, Chemistry and Physics). To satisfy IBMYP requirements, all students must complete a Personal Project, produce one e-Portfolio and take IB onscreen Assessments in Grade 10.

THE IB DIPLOMA PROGRAMME



Following completion of MYP in Grade 10, Grade 11 and 12 students embark on the International Baccalaureate Diploma Programme. It is a demanding pre-university course of study and designed for highly motivated secondary school students aged 16 to 19. It stimulates critical thinking, reflection on knowledge and experience gained inside and outside the classroom.

Each examined subject is graded on a scale of 1 (minimum) to 7 (maximum). Students must complete three subjects at Higher Level (HL) and three at Standard Level (SL).

The award of the Diploma requires a minimum total of 24 points and completion of three additional requirements: Extended Essay, Theory of Knowledge (TOK), and Creativity, Activity and Service (CAS).

The maximum score of 45 points includes 3 bonus points for good work completed in the extended essay and TOK.

SUBJECT GROUPINGS

Group 1-Studies in Language and Literature: English A

Literature (HL & SL) Language & Literature (HL & SL)

Group 2-Language Acquisition: Language B

French B (HL & SL) Spanish AB initio (SL) Spanish B (HL & SL)

Group 3-Individuals and Societies

Economics (HL & SL)
Geography (HL & SL)
History (HL & SL)
Digital Society (HL & SL)
Business Management (HL & SL) Environmental Systems & Societies (HL & SL)
Psychology (HL & SL)
Global Politics (HL & SL)

Group 4- Sciences

Biology (HL & SL)
Physics (HL & SL)
Environmental Systems & Societies (HL & SL)
Chemistry (HL & SL)
Computer Science (HL & SL)

Group 5-Mathematics

Analysis and Approaches (HL & SL)
Applications and Interpretation (HL & SL)

Group 6-The Arts

Visual Arts (HL & SL)
Music (HL & SL)
Theatre (HL & SL)



IB: COLLEGE/UNIVERSITY ENROLMENT



Australia

Australian Catholic University

Barbados

American University of Barbados

Bulgaria

Medical University of Pleven

Canada

Algoma University
Brock University
Carleton University
Concordia University
Dalhousie University
Huron University
Lakehead University
Laurentian University
Memorial University of Newfoundland
McGill University
McMaster University
Ontario College of Art and Design
Queen's University
Redeemer University College
Toronto Metropolitan University
Simon Fraser University
St. Mary's University
Thompson Rivers University
Trent University
Ontario Tech University
University of Alberta
University of British Columbia
University of Calgary
University of Guelph
University of Lethbridge
University of Manitoba
University of New Brunswick
University of Northern British Columbia
University of Ottawa
University of Regina
University Of Saskatchewan
University of Toronto
University of Victoria
University of Waterloo
University of Windsor
University of Winnipeg
Vancouver Institute of Art
Western University
Wilfrid Laurier University
York University

China

Dalian Medical University
Shanghai Jiao Tong University (SJTU)

Cyprus

University of Nicosia

Czech Republic

Charles University

UAE

Dubai Institute of Design
Tetr College of Business
New York University, Abu Dhabi

France

American University of Paris
EPITA France
ÉSEG School of Management
Audencia Business University
Institut Culinaire de France
Jean Moulin University
LISAA School of Art & Design
Montpellier Business School
Parsons Paris
Renne Business School
Sciences Po
Université Grenoble Alpes
University of Lille
University of Savoie Mont Blanc

Germany

Deggendorf Institute of Technology
Jacobs University Bremen

Ghana

Academic City College
Accra College of Medicine
Ashesi University
Central University College
GIMPA
Kwame Nkrumah University of Science & Technology
University of Cape Coast
University of Ghana
Mountcrest University College
Lancaster University
Webster University
Wisconsin International University College

Hungary

University of Debrecen Medical School
University of Pecs Medical School

India

DR. M.G.R. University and Research Institute, Chennai
Loyola College
Institute of Fashion Designing

Ireland

University College Cork
University College of Dublin
University of Limerick
Royal College of Surgeons Ireland
Technological University of Dublin

Italy

John Cabot University

Kenya

United States International University (USIU), East African branch

Malaysia

Institute of Medical Sciences at Mantin

Mauritius

African Leadership University
Middlesex University

Qatar

Northwestern University

Rwanda

African Leadership University

Singapore

Nanyang Technological University

Slovakia

University of Safarik

South Africa

University of the Witwatersrand

South Korea

Incheon National University
Sookmyung Women's University

Spain

IE University
European University (EU) Business School

Switzerland

Culinary Arts academy Switzerland École Polytechnique Fédérale de Lausanne (EPFL)
European University (EU) Business School

The Netherlands

Hanze University of Applied Sciences, Netherlands
Radboud University
University at Twente
University of Amsterdam
University of Groningen
Utrecht University
Vrije Universiteit Amsterdam

United Arab Emirates

New York University- Abu Dhabi
Herriot-Watt University Dubai University of Birmingham Dubai

UK

Abertay University
Aberystwyth University
Anglia Ruskin University
Aston University
Bangor University
Bath Spa University
Birmingham City University

Brighton & Sussex Medical School
Brunel University
Buckinghamshire New University
Cardiff University
City University- London
Coventry University
De Montfort University
Falmouth University
Glasgow Caledonian University
Heriot-Watt University
Imperial College London
Keele University
Kings College- London
Kingston University
Liverpool Hope University
Liverpool John Moores University
London Metropolitan University
London South Bank University
Loughborough University
Manchester Metropolitan University
Medway School of Pharmacy
Middlesex University
Newcastle University
Nottingham Trent University
Oxford Brooks University
Plymouth University
Queen Mary University of London
Queen's University Belfast
Ravensbourne University London
Robert Gordon University
Royal Agricultural University
Staffordshire University
Swansea University
Teesside University
The University of Law
Ulster University
University College London
University for the Creative Arts
University of Aberdeen
University of Birmingham
University of Bolton
University of Bournemouth
University of Bradford
University of Brighton
University of Bristol
University of Buckingham
University of Cambridge
University of Lancashire
University of Chester
University of the Creative Arts
University of Durham
University of Dundee
University of East Anglia
University of East London
University of Edinburgh
University of Essex
University of Exeter
University of Glasgow
University of Gloucestershire
University of Greenwich
University of Hertfordshire
University of Hull
University of Kent
University of Kingston
University of Lancaster
University of Leeds
University of Leicester
University of Lincoln
University of Liverpool
University of London
University of Manchester
University of Newcastle
University of Northampton
University of Nottingham
University of Nottingham International College
University of Portsmouth
University of Reading
University of Salford

University of Sheffield
University of Southampton
University of South Wales
University of Stirling
University of Sunderland
University of Surrey
University of Sussex
University of Warwick
University of West England, Bristol
University of Westminster
University of Winchester
University of Wolverhampton
University of York
UWE Bristol
York St. John University

USA

Adelphi University
Agnes Scott College
Albany College of Pharmacy and Health Sciences
Albion College
Albright College
Allegheny College
American University
Arizona State University
Augsburg University
Augustana University
Azusa Pacific University
Babson College
Baldwin-Wallace College
Barnard College
Columbia University
Barry University
Beloit College
Bennington College
Berea College
Bentley University
Binghamton University
Boston Architectural College
Boston College
Boston University
Bowling Green State University
Bradley University
Bryant University
Bryn Mawr College
Bucknell University
Buffalo State College
Caldwell University
California State University- Long Beach
Calvin College
Carnegie Mellon University
Castleton University
Central Connecticut State University
Champlain College
Chapman University
Chicago State University
Clark Atlanta University
Clarkson University
Clark University
Clemson University
Cleveland State University
College of Charleston
College of Saint Elizabeth
College of Wooster
Colgate University
Colorado School of Mines
Columbia College- Chicago
Columbia University
Concordia College
Connecticut College
Cornell University
Dartmouth College
Denison University
DePaul University
DePauw University
DeSales University
Dickinson College

Drake University
Drew University
Drexel University
Duquesne University
Earlham College
East Stroudsburg University
Elms University
Embry-Riddle Aeronautical University
Emerson College
Emmanuel College
Emory University
Fashion Institute of Design and Merchandising
Fisk University
Florida Institute of Technology
Florida Southern University
Fordham University
Franklin & Marshall
Full Sail University
Georgia State University
Goucher College
Guilford College
Grinnell College
Gustavus Adolphus College
Hampshire College
Hanover College
Harrisburg University of Science & Technology
Hartwick College
Haverford College
Hawaii Pacific University
High Point University
Hofstra University
Hope College
Houghton College
Hult International Business School
Illinois College
Illinois Institute of Technology
Illinois Wesleyan University
Iona College
Iowa State University
Indiana University
Indiana University- Purdue
Ithaca College
Jacksonville University
James Madison University
Juniata College
Kalamazoo College
Kennesaw State University
Kansas State University
Kent State University
Knox College
La Salle University
Lafayette College
Lake Forest College
Lawrence Technological University
Lehigh University
Long Island University
Louisiana State University
Loyola Marymount University
Loyola University
Loyola University Chicago
Luther College
Lycoming University
Macalester College
Manhattanville College
Marietta College
Marist College
Marquette University
Maryland Institute College of Art Massachusetts
College of Pharmacy and Health Sciences
Massachusetts Institute of Technology
Mercer University
Mercyhurst University
Merrimack College
Miami University, Oxford, Ohio
Michigan State University



Middlebury College
Millersville University
Milwaukee School of engineering
Monmouth University
Montclair University
Mount Holyoke College
New Jersey Institute of Technology
New York Film Academy
New York Institute of Technology
New York School of Art and Design
New York University
North Carolina Central University
Northeastern University
Oberlin College
Ohio University
Ohio Wesleyan College
Old Dominion University
Pace University
Parsons, the New School of Design Pennsylvania
State
Pepperdine University
Philadelphia University
Pratt Institute
Princeton University
Purdue University - Indianapolis
Quinnipiac University
Regis College
Rider University
Ringling College of Art and Design
Rocky Mountain College of Art and Design
Rollins College
Roanoke College
Rochester Institute of Technology
Rowan University
Rutgers University
Santa Clara University
SCAD
School of Art Institute of Chicago
Sci-Arc University
Seattle University
Seton Hall University
Shippensburg University
Skidmore College
Smith College
South Carolina State University
Southern California Institute of Architecture
Spelman College
State University of New York, Plattsburgh, New York
Stevens institute of Technology
Stevenson University
St. Ambrose University
St. Joseph's University
St. Lawrence University
St. Leo University
St. Louis University

St. Olaf University
Stony Brook University
Suffolk University
SUNY Buffalo
SUNY Oswego
SUNY Plattsburgh
Syracuse University
Temple University
Tetr College of Business
Texas Christian University
The George Washington University
The School of the Museum of Fine Arts
The School of Visual Arts
The University of the Arts
Townson University
Trinity University
Truman University
Truman State University
Union College
University at Albany
University of Arizona
University of California, Davis
University of California-San Diego
University of Central Florida
University of Cincinnati
University of Colorado- Boulder
University of Delaware
University of Connecticut
University of Florida
University of Hartford
University of Indianapolis
University of Iowa
University of Kentucky
University of Lynchburg
University of Maine
University of Maine at Forte Kent
University of Mary, Washington
University of Maryland
University of Maryland Baltimore county
University of Massachusetts
University of Miami
University of Michigan
University of Michigan, Dearborn
University of Minnesota
University of Minnesota, Duluth
University of Minnesota, Twin Cities
University of New Haven
University of North Carolina, Charlotte
University of Northern Iowa
University of Oregon
University of Pennsylvania
University of Pittsburgh
University of Rochester
University of Rhode Island
University of Richmond
University of San Diego

University of South Florida
University Of St. Thomas
University of Tampa
University of Toledo
University of Tulsa
University of Wisconsin
Utica College
Vassar College
Villanova University
Virginia Commonwealth University
Virginia Polytechnic Institute
Virginia Tech University
Walsh University
Wartburg University
Washington College
Washington & Jefferson College
Webster University
Wellesley College
Wells College
Wentworth Institute of Technology
Westchester University
Whittier College
Wheaton College
Williams College
Wilson College
Woodbury University
Worcester Polytechnic Institute
Yale University

West Indies

St. George's University, Grenada

SERVICE LEARNING

Service learning at TIS is a cornerstone of our educational philosophy, reflecting our commitment to holistic development and community engagement. Rooted in our values of service, integrity, and excellence, service learning empowers students to apply classroom knowledge to real-world challenges, fostering a deep sense of civic responsibility and global citizenship. Our projects are student-centred, aligning with the MYP and DP curriculum requirements, and are designed in partnership with the UN Sustainable Development Goals (SDGs). Through local and global collaborations, our students work with various organisations to drive meaningful change, both within their communities and beyond. Key service projects include Community Development - The Akorlikope Village project, Art Therapy Programmes, Borehole for Rural Areas - Water for Life, Feeding Programme, Literacy Project, Recycling Initiatives, SDGs Awareness Campaigns, Soccer Outreach, TIS Red Cross Society, and United to Light Ghana, to name a few.

EXTRA CURRICULA PROGRAMMES

At TIS, we believe in nurturing well-rounded individuals. Our extensive extra-curricular programmes provide students with the perfect balance to complement their academic pursuits, offering a diverse array of activities that cater to various interests and talents. These programmes are designed to promote personal growth, teamwork, and leadership skills, ensuring that our students develop both inside and outside the classroom. Each student at TIS is encouraged to choose a minimum of three activities to engage in weekly throughout each semester, ensuring they experience a broad spectrum of opportunities.

MUSIC

- Brass Band
- Classical
- Guitar
- Double Bass
- Drums
- Guitar
- Keyboard
- Piano
- Pop Band
- Saxophone
- School Choir
- Violin
- Violoncello
- Orchestra

TIS CLUBS AND EVENTS

- Architecture Club
- Art And Craft Club
- Bead Making Club
- Buddies Without Borders – Buddies for Change TIS Club
- Chess Club
- Cooking Club
- Cosmetology Club
- Debaters Society
- Fascinator Club
- Garden Club
- Innovation and Entrepreneurship Club
- Insight TV

- Model United Nations (MUN) Club
- Mooting Society
- Operation Smile Club
- Photography Club
- Public Speaking Club
- Red Cross Club
- Readers' and Writers' Club
- Robotics Club
- Sewing Club (Hand & Machine Sewing)
- Sign Language Club
- Song Writing Club
- STEAM Club

- TIS Interact Club
- Visual Art Club
- Chocolate Friendship Day
- Expression Day
- School Magazine
- Science Fair
- Spirit Week
- Sporty Family
- The Annual School Play



SPORT

Sport is one of the pillars of the TIS culture. It challenges students to go beyond their limits in acquiring techniques and skills that will enable them to enjoy sporting activities for fun and as competitive events. Students are exposed to, and given the opportunity to exhibit, their talents in a wide range of sporting activities.



These include badminton, basketball, keep fit club, swimming, taekwondo, soccer, volleyball, handball, tennis, table tennis, squash, athletics, Golf and Horse Riding. As part of our in-house activities, students are given the opportunity to represent their colour groups in all the above sporting events.

TIS initiated the Tema International Schools Sports Association (TISSA) and is a member of the International Schools Sports Association of Ghana (ISSAG), participating in interschool competitions in athletics, swimming, volleyball, tennis, table tennis, soccer, badminton, and basketball.

CULTURAL PERFORMANCES

TIS nurtures creativity through a variety of cultural performance opportunities, encouraging students to showcase their talents in drama, music, dance, and visual arts. Each year, students participate in annual theatre performances, music concerts, and art exhibitions, earning recognition from prestigious platforms, including the Presidency of Ghana and the Duke of Edinburgh International Awards. Our students have delivered stellar performances at the National Theatre, including renowned productions such as the adaptations of the classical Disney productions *The Lion King* and *Beauty and the Beast* and the Broadway hit *The Prince of Egypt*. We also proudly present a series of African plays that resonate with our cultural heritage, such as *Sarafina* by Mbongeni Ngema, *Dilemma of a Ghost* by Ama Ata Aidoo, *Dormitory C: The Inspection* by Mrs. C. S. Akyeampong, *Joseph and the Amazing Technicolor Dreamcoat* by Andrew Lloyd Webber and Tim Rice, *The Marriage of Anansewaa* by Efua Sutherland, and *Once on This Island* by Lynn Ahrens and Stephen Flaherty.



These performances are a testament to the exceptional talent and creativity nurtured at TIS, with Primary School students also taking part in these major events.

THE DUKE OF EDINBURGH INTERNATIONAL AWARD (DOEIA)

Since January 2018, TIS has been a proud centre for the Duke of Edinburgh International Award in Ghana. Through a series of expedition camps and activities that align with the award's framework, our students challenge themselves to achieve excellence. To date, we have celebrated 101 Gold Award recipients, 43 Silver, and 69 Bronze-being TIS students.

Additionally, we have had 1 Silver and 2 Gold Award recipients from the community. As a centre for the Award, we offer opportunities not only for our students but also for youth from the surrounding community. Our 'Dukies' continually strive to meet and exceed the challenges of this prestigious award.





STUDENT LEADERSHIP

A myriad opportunities for students to unearth, hone and demonstrate their leadership skills by taking up a range of responsibilities from Grades 7 to 12. These include but are not limited to class representatives on the Student Council (Grade 7-12); Student Council executive leaders (Grade 11-12); Inter-Colour leaders; Model United Nations (MUN) participants; Service Learning, Creativity, Activity & Service (CAS) initiators; Club Executives as well as student organizers of sporting and cultural activities.

TIS ALUMNI

Our past students, who have pursued undergraduate studies in colleges and universities around the world, are a special part of TIS. Most Alumni frequently visit the school to meet their former teachers and staff, talk to students about their experiences and participate in different school events.

Members are featured regularly in our bulletins and newsletters. Not only were they champions at TIS, but our alumni are also stars in their chosen studies and careers.





SCHOOL GOVERNANCE

Tema International School is a Private Limited Liability Company incorporated under the Companies Code, 1963 (Act 179). Each member of the Board of Governors is appointed by the Board of Directors of the Company to serve for a minimum term of two years and may be reappointed by the Board of Directors.

Among the Board's principal functions are to: ensure the school is well-managed and performs to its best potential consistent with the

stated mission, vision and values; set the strategic direction for the school and approve the strategic plan; support the implementation

of the strategic plan and monitor progress regularly. The Board has delegated authority for the operations and administration of the school to the Principal. The Board aims to fulfill the dream of the Founding Family.

RELATIONSHIP WITH PARENTS

A successful school reflects a strong school community. Although TIS is a residential school, the school ensures regular communication with parents through weekly bulletins and monthly newsletters, school calendar, frequent events to which parents are invited, online reporting and an open door policy with the Principal. The Primary School hosts end of unit 'celebrations' and interviews every six weeks

Learning Environment

TIS students are very focused on successful academic results so that they can gain admission to their college or university of choice. Our facilities cater for our scientists, musicians, artists, sports stars, computer scientists and academics. Our school-wide wifi network enables our students to access online resources, digital textbooks and learning management system within our IT labs or by using their own devices.

The learning programme and environment promote our students to become active learners and critical thinkers within a balanced framework.

The TIS DP graduate is an articulate leader who is intelligent, balanced, independent and committed to service and lifelong learning.



SCHOOL SPIRIT: INTER-COLOUR HOUSES

Each student and members of staff belong to a colour house: Red Kigelia, Green Wisteria, Blue Cedar and Yellow Outeniqua. A variety of activities are lined up throughout the year, such as: singing competition, dance battle, spelling bee, current affair quiz, swimming championships, athletics carnival, maths exhibition and quiz, chess tournament and sporty family. These activities promote healthy competition and create a bond amongst students and staff, and in the process, ensure a very happy and conducive atmosphere on campus. The TIS community always looks forward to these competitions.



RED KIGELIA



YELLOW OUTENIQUA



GREEN WISTERIA



BLUE CEDAR

A GREEN SCHOOL

TIS is dedicated to sustainability and environmental responsibility, deeply embedding the SDGs into our practices. In partnership with Unite to Light USA, we have distributed over 4,000 solar LED lights to communities across Ghana that lack access to electricity. Our students lead the way in organising and participating in campaigns that promote recycling, mindful consumption, and the elimination of waste in food, electricity, and water usage. The school's water needs are met through our borehole, and we ensure high water purity standards with our in-house filtration system, further demonstrating our commitment to a green and sustainable environment. Through these student-led initiatives, we actively educate and raise awareness within the school community about the importance of conserving resources and minimising waste.



International Mindedness

In today's increasingly interdependent world, it is more important than ever to ensure students are prepared for their roles as global citizens. As our university placement statistics demonstrate, our graduating Grade 12 students study in the four corners of the world.

TIS is very fortunate, and extremely proud, of our international students from 9 different countries. Within our student leadership structure, there is an international student representative as part of the SRC executive positions.

There are also international teaching staff who ensure global and local contexts are presented to students. International and cultural day is a very significant, colourful and anticipated event that is held during TIS Founders' Week.

Study, sports, subject-specific and MUN (Model United Nations) trips to international venues ensure that the TIS

community is aware of its own culture and that of others. This awareness enables an understanding that people with different perspectives, values, culture and understandings can also be right!

